

A nighttime photograph of a city street, likely in New York City, featuring the Chrysler Building in the background. The scene is illuminated by streetlights and building windows, creating a vibrant urban atmosphere. The Chrysler Building's Art Deco architecture is prominent, with its iconic Art Deco crown visible. The street is lined with trees and buildings, and the overall scene is captured in a low-angle shot, looking up at the skyscrapers.

E-LITE semicon

MAZZO SERIES

Urban
Lighting



THE TIMELESS STYLE FOR URBAN SPACE

With its timeless style and soft glow,
Mazzo creates a elegant and gentle air for all kinds of city activities,
be it jogging, driving, shopping or socializing.

As the most versatile outdoor lighting solution,
Mazzo fits seamlessly into any urban setting with a range of installation
options - pole-top, bracket and suspension.



Parks,
promenades
& pathways



Urban &
residential
streets



Parking

E-LITE semicon / Hello@elitesemicon.com / www.elitesemicon.com

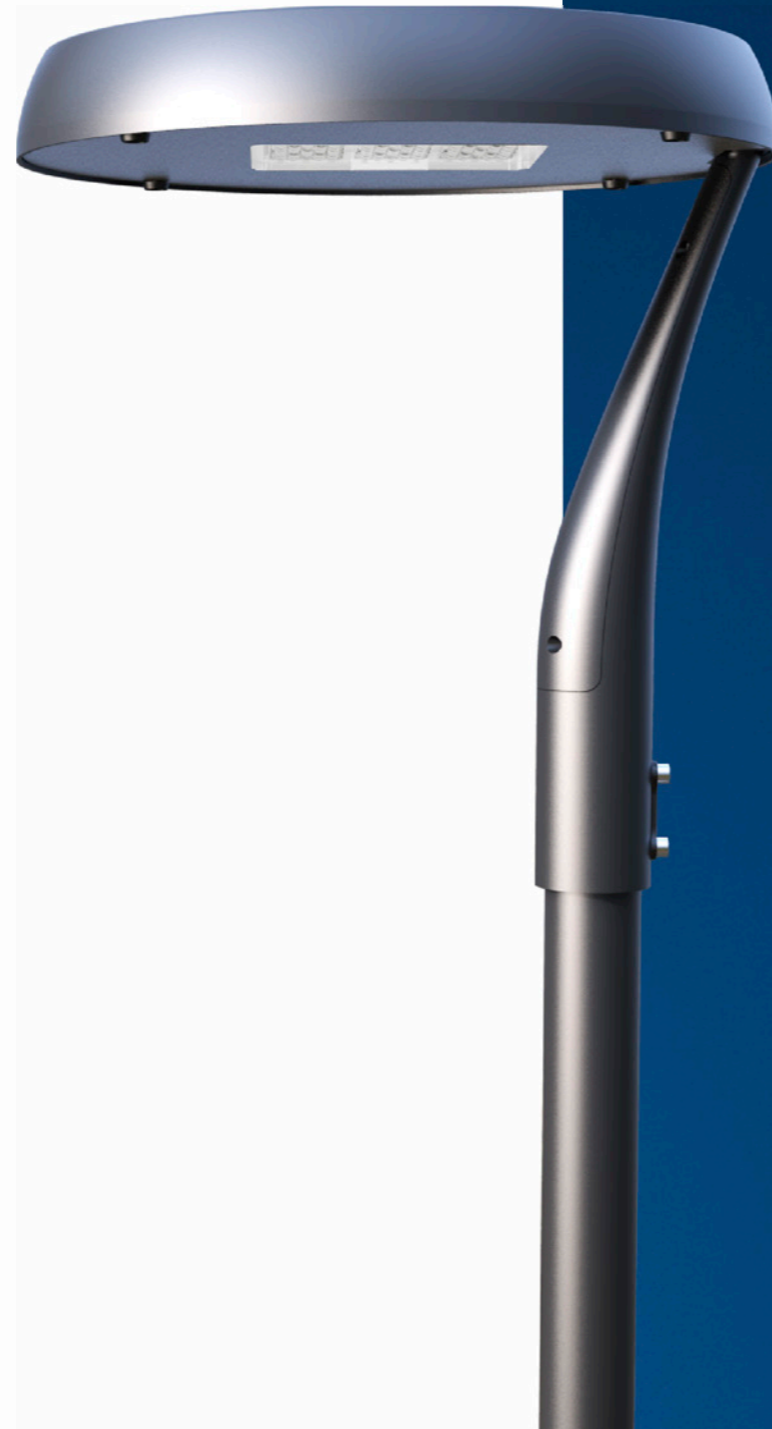
ONE DESIGN MANY POSSIBILITIES

Mazzo empowers designers to create visual harmony for a city. Its flexibility makes it easy to use the same design for all kinds of urban spaces for new or retrofit projects.

Post Top
Two Arm



Post Top
Lyre



Lantern





FEATURES

Slim and elegant appearance creates a pleasant and welcoming atmosphere for urban space.

Good quality lighting with the right color properties.

Excellent glare control for visual comfort.

Easy maintenance.



PERFORMANCE

	30W~150W
	130lm/W
	Philips Lumileds
	AC 100~277V
	0.95 min
	Sosen
	≥70
	4500~5500K (2500~5500K optional)
	L70>100,000hours
	70x140° / 70x150° / 95x150° / 85x155° / 120°
	IP66
	IK09
	3G Vibration
	Operating Temperature:-45°C to +45°C (-49°F to 113°F) Storing Temperature:-45°C to +80°C (-49°F to 176°F)



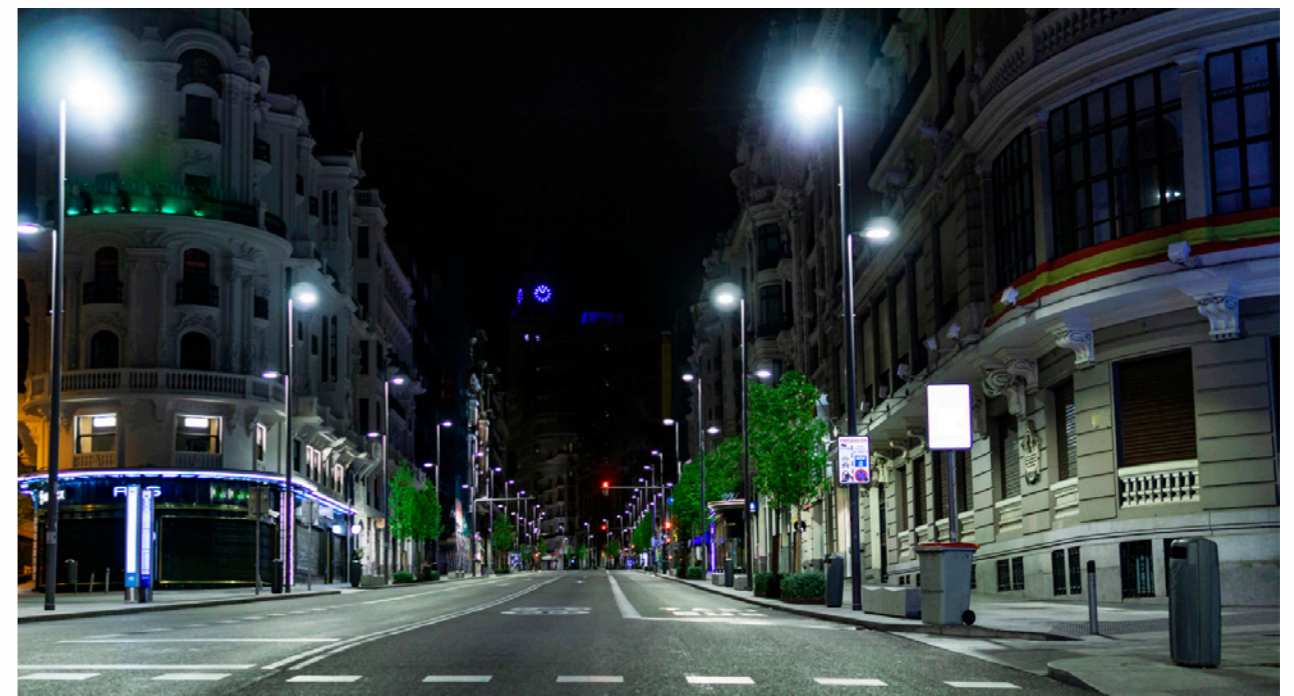


Side Arm



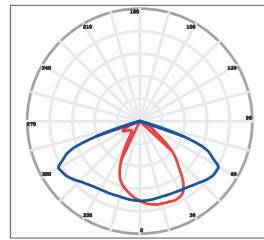
SPECIFICATIONS

Part#	Power	Efficacy (IES)	Total Lumens	Product Dimension	N.W
EL-UBMZ-30	30W	130lm/W	3,900lm	706×490×91mm	4.9kg
EL-UBMZ-60	60W	130lm/W	7,800lm		4.95kg
EL-UBMZ-90	90W	130lm/W	11,700lm		5.2kg
EL-UBMZ-120	120W	130lm/W	15,600lm		5.5kg
EL-UBMZ-150	150W	130lm/W	19,500lm		5.5kg

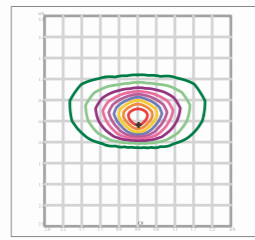


PHOTOMETRICS

70x140° (TYPE II-S)

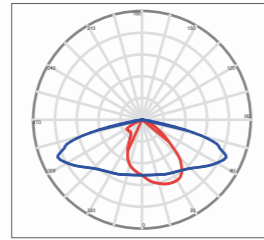


— 0.0~180.0
— 90.0~270.0

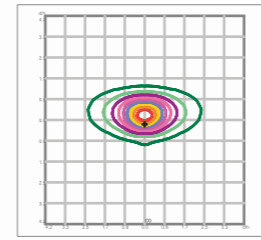


Mount Height(m): 6

70x150° (TYPE II-M)

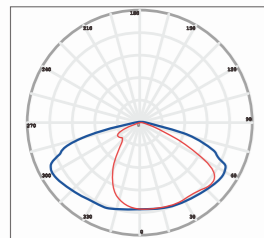


— 0.0~180.0
— 90.0~270.0

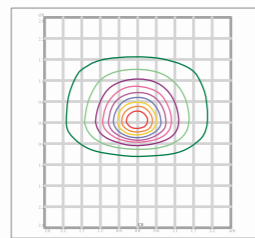


Mount Height(m): 8

95x150° (TYPE II-S)

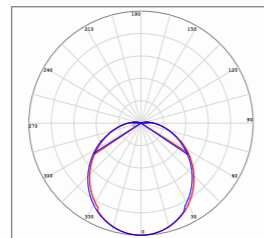


— 0.0~180.0
— 90.0~270.0

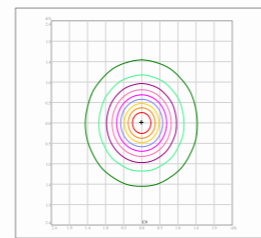


Mount Height(m): 6

120° (TYPE V)



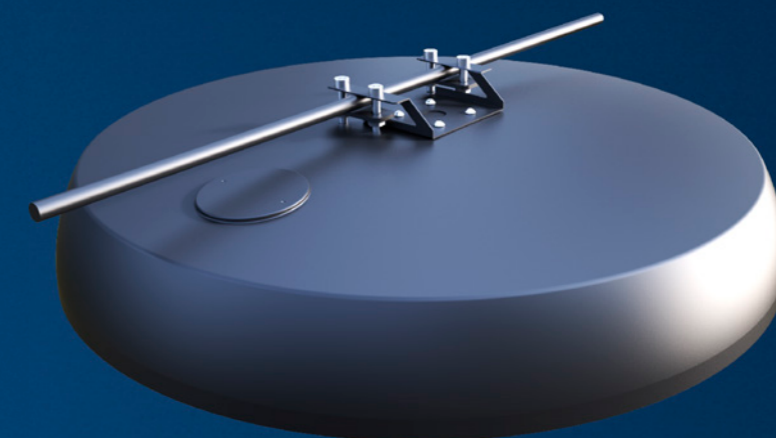
— 0.0~180.0
— 90.0~270.0

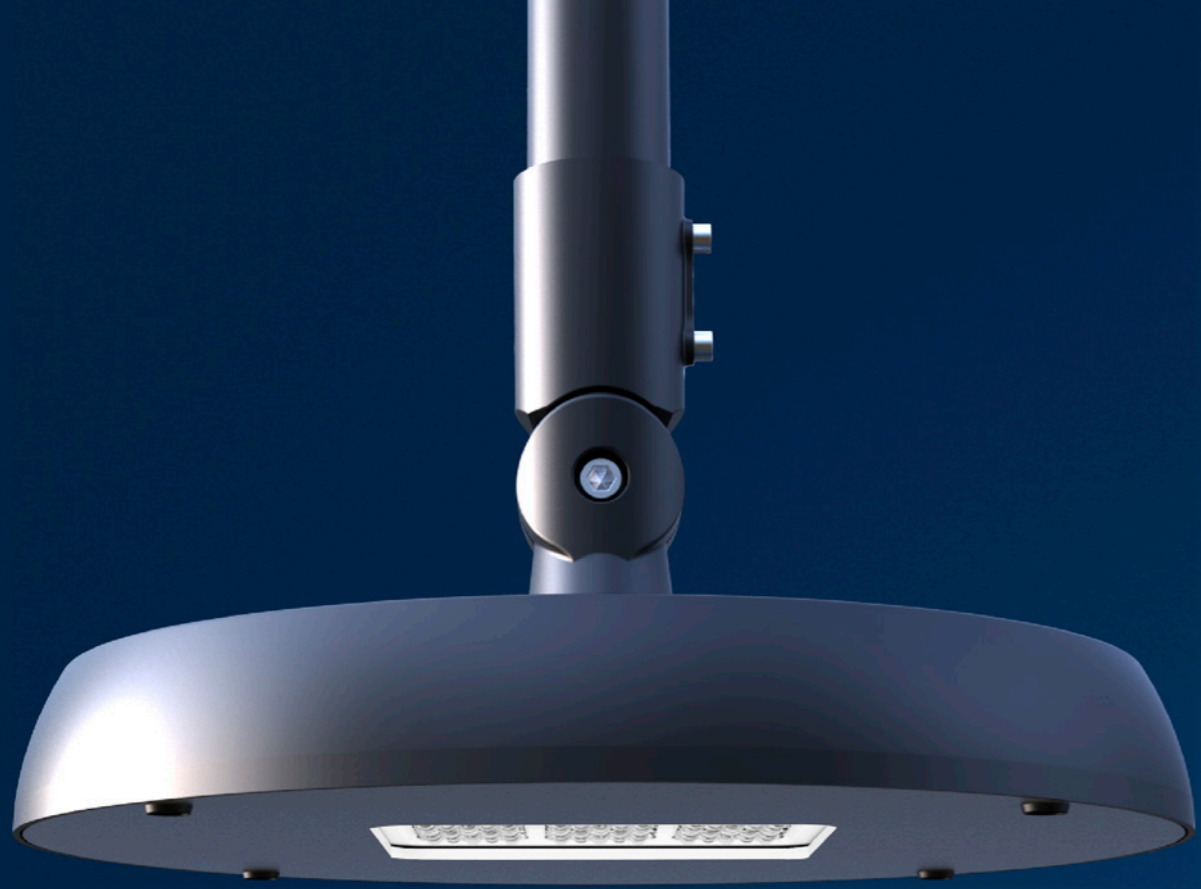


Mount Height(m): 6

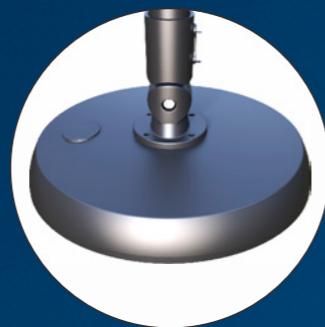


Suspended
On Cable





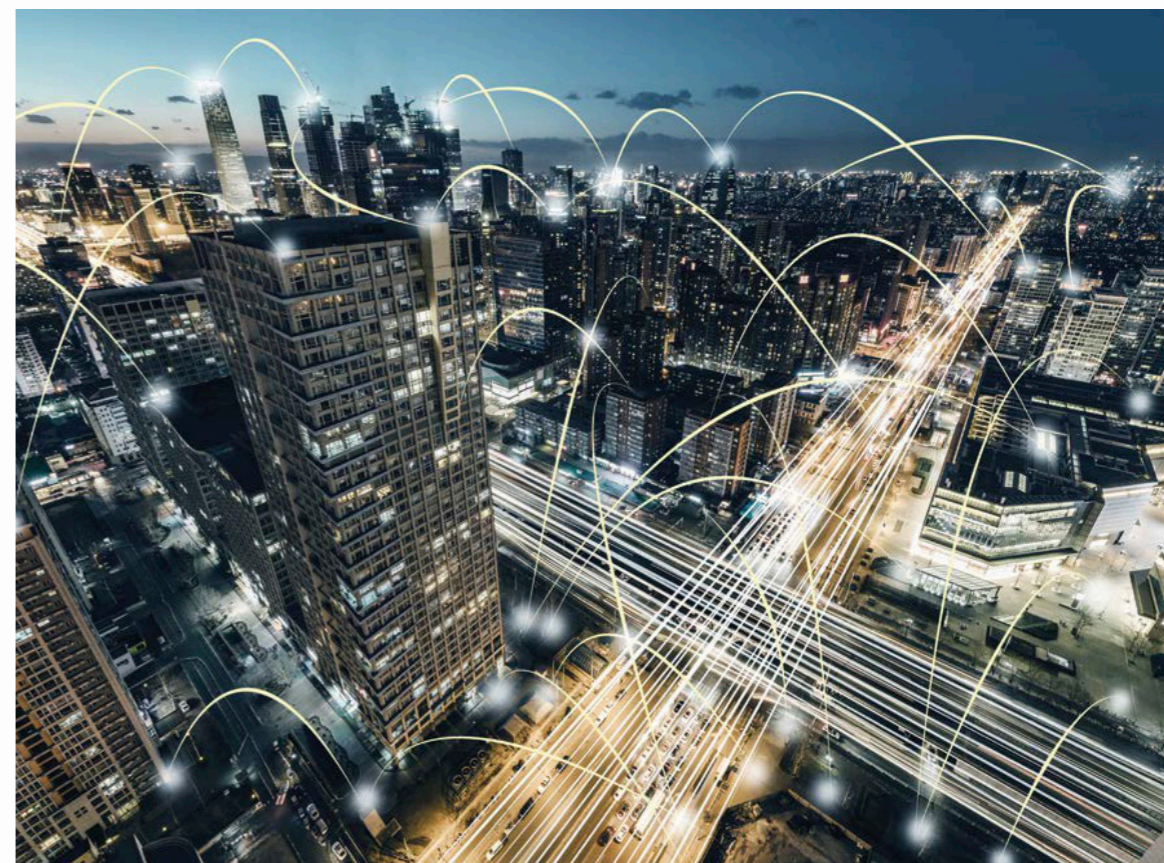
Suspended
On Pole



SMART LIGHTING

iNET™ Intelligent Lighting Monitor & Control System is a cloud based wireless smart system designated for lighting management.

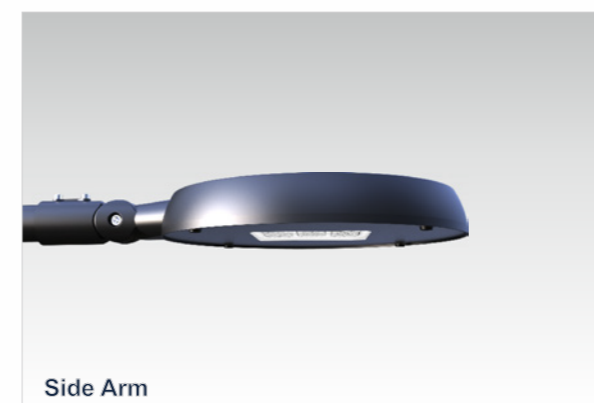
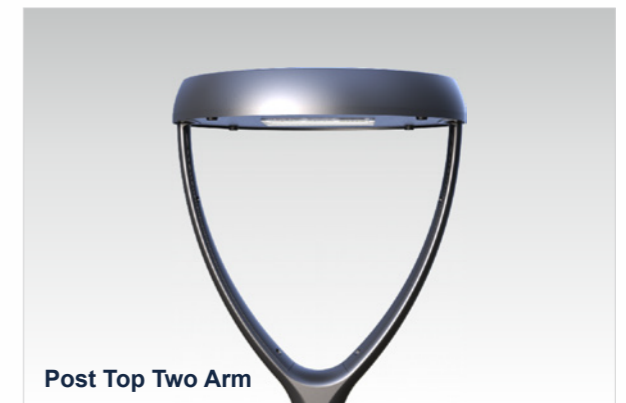
With gateways + control node., iNET™ System monitors lights performance status, collects operation data, controls lights on/off or dimming, and sends alarm in case of fault detected.



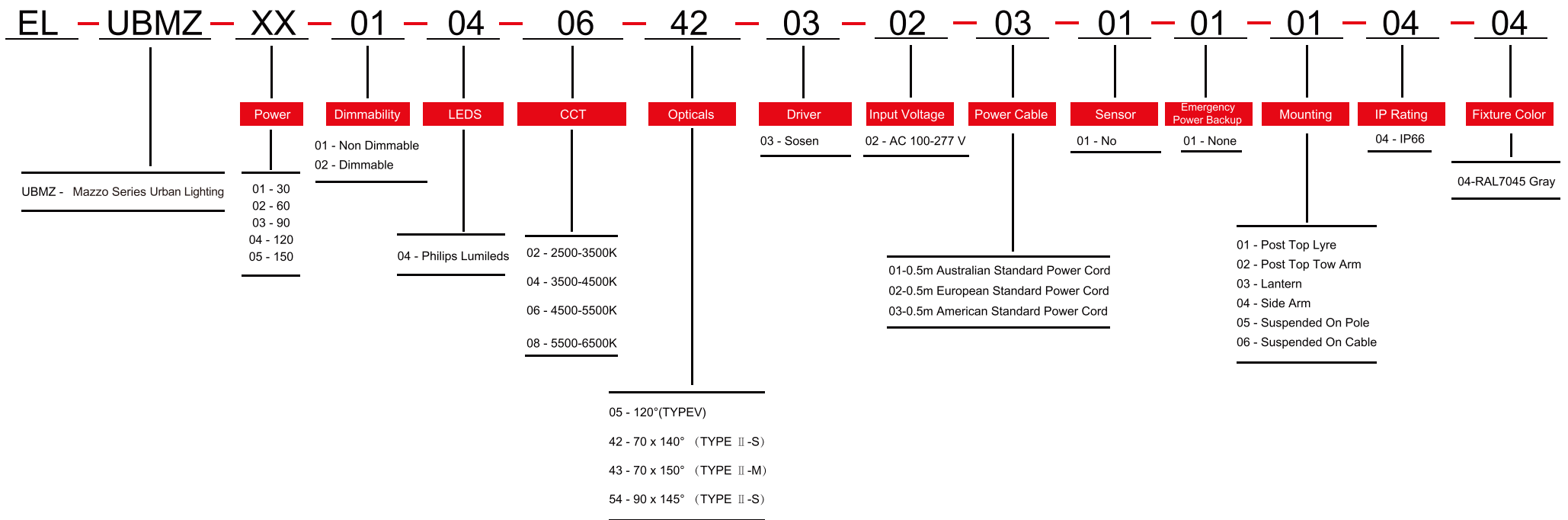


INSTALLATION

For high performance and long term reliability, the light should be installed in free air.



ORDERING INFORMATION



E-Lite Semiconductor Co., Ltd.
 Headquarter & Factory
 Website: <http://www.elitesemicon.com>